

## Manual for Sbooster's Active Interface Board (AIB) for the Node N130

Thank you for purchasing the Sbooster-Node N130 AIB to upgrade the Bluesound Node N130.

In just 20 minutes of your DIY-time you are able to take out the stock SMPS-board of the Bluesound Node N130 and to connect it to the Sbooster BOTW P&P ECO 5-6V external power supply.

In the package:

- Active Interface Board (AIB)
- Cryo-treated replacement fuse for BOTW P&P ECO MKII 5-6V, marked with a black dot.

### Notes before you start:

- The AIB for the Node N130 can only work with the BOTW P&P ECO MKII 5-6V, **set to 6V**
- Make sure the Node N130 and the BOTW P&P ECO MKII 5-6V are **disconnected from the mains**.
- **Caution:** Watch-out for **Electrostatic Discharge (ESD)**.  
Make sure that when you are working on the Node N130, the AIB and/or the BOTW P&P ECO MKII 5-6V, that **you are fully electric discharged to prevent damage to the electronics**.

You can discharge yourself by touching your grounded device like an Amplifier, Radiator or Fridge, etc.

Needed tools:

- Screwdriver



**Step 1:** Remove the rear cover, which is attached with a magnet.



**Step 2:** Remove 3 screws to unlock the top of the Node.



**Step 3:** Carefully open the top part of the housing by lifting it from the back of the device, until you hear a loud “click”. Be careful not to damage the tapes and wires.

**Do not disconnect any of the tapes and wires, unless indicated hereafter.**



**Step 4:** Disconnect the white connectors from the sockets.



**Step 5:** Remove 4 screws of the Node's power supply board and take out the metal bracket that covered the connector.



**Step 6:** Remove 2 screws from the back panel. Then remove the Node's switching power supply board.



**Step 7:**

**IMPORTANT:**

**Take out the black plastic sheet.**



**Step 8:** Result after removing the internal SMPS and plastic cover sheet.

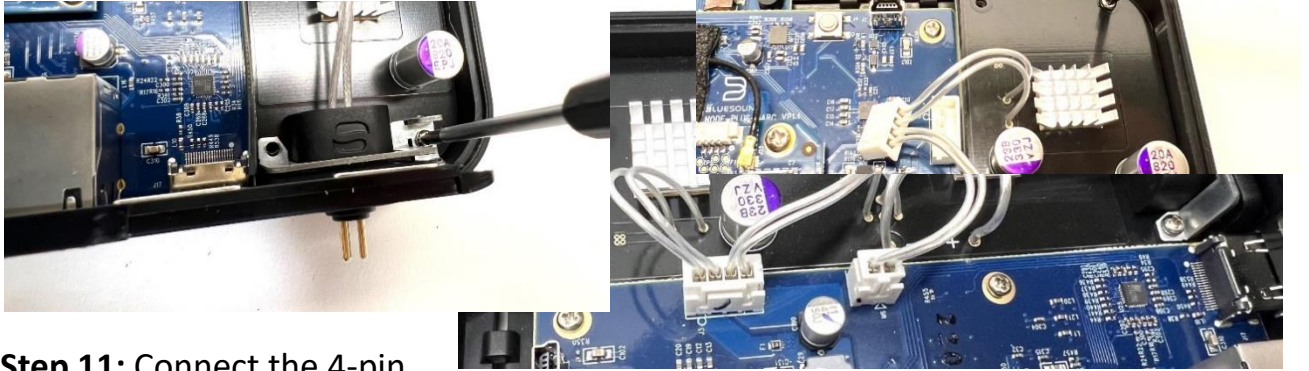


**Installing the Sbooster Node AIB**

**Step 9:** Insert the AIB so that the pin on the bottom plate fits the hole on the AIB.



**Step 10:** Place the mains connector plate over the connector and screw the AIB with 4 screws to the enclosure.

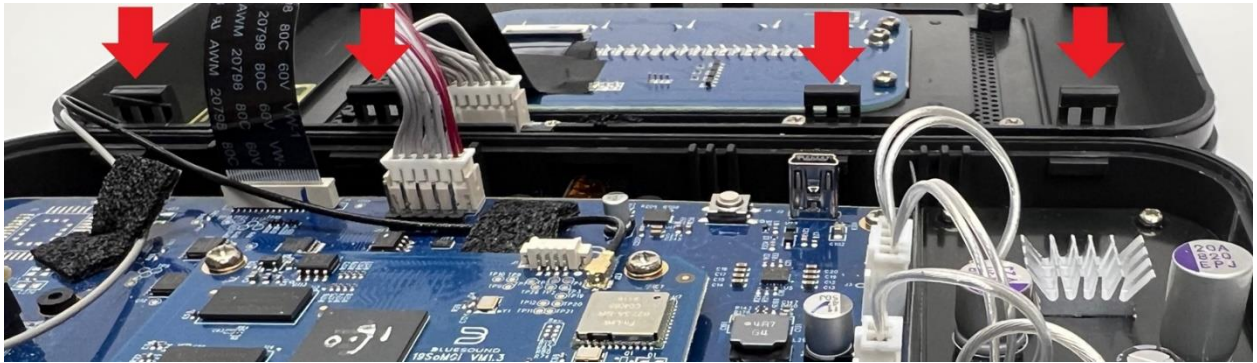


**Step 11:** Connect the 4-pin and 2-pin connectors in their matching sockets.

**Step 12:** Screw the 2 screws to tighten the Sbooster connector.



**Step 13:** Place the top of the enclosure *carefully* on the bottom then hook the plastic parts in the bottom. Do not damage the tape and wires. When closing you will probably need to push it firmly.



**Step 14:** Screw the last screws back into place and then install the magnetic panel cover.



Now the Bluesound Node is ready to be connected to the Sbooster BOTW P&P ECO 5-6V.

Before using, please **read the manual** of the Sbooster BOTW P&P ECO power supply.

**Please note:** the BOTW P&P ECO 5-6V power supply needs to be set on **6V DC output setting**

The Sbooster AIB includes an active filter. This means that the filter needs power to operate. The output to the Node is a cleaned 5V.



Final step: connect the BOTW P&P ECO and switch on the power.

**Enjoy more music.....**

## Changing the fuse of the Sbooster BOTW P&P ECO power supply

To change the fuse, the enclosure of BOTW P&P ECO has to be opened. Opening the enclosure is straightforward.

### Step 1:

Turn "OFF" the BOTW P&P ECO and wait for 30 seconds until the green LED is fully dimmed. Disconnect the BOTW P&P ECO from your audio device. **Disconnect the BOTW P&P ECO from the mains and remove the mains cable from the BOTW.**



### Step 2:

Turn the BOTW P&P ECO upside down. There are 4 small screws on the bottom side; remove them.

### Step 3:

Turn the BOTW P&P ECO back on its feet. The enclosure can now be opened. This might be difficult. To make this easier use a wooden clothespin, chopstick, or other type of wedge to shove in the gap/line between the top and bottom parts of the enclosure.



### Step 4:

When the enclosure is opened, you will find the fuse on the back side of the mains filter. You can easily flip it out with a pencil or chopstick.



**Step 5:**

Install the new fuse and install the enclosure cover back on the bottom then screw the 4 screws. And you are ready!

**DO NOT use the BOTW P&P ECO without enclosure cover.**

**The mains filter contains a lethal voltage.**

**Sbooster**

Manufactured by HD Electronics Ltd.

For more information visit:

[www.sbooster.com](http://www.sbooster.com)

For questions contact your dealer, or send us an email:

[info@sbooster.com](mailto:info@sbooster.com)